



SUBTLE MEDICAL
FASTER, SAFER, SMARTER™



Driving Faster, Higher Quality MRI & PET with SubtleHD(MR)[™] & SubtlePET[™]

A Case Study with Akumin



About Akumin

Akumin is a national leader in comprehensive outpatient radiology and oncology solutions, serving as the partner of choice for leading U.S. hospitals, health systems, and physician groups. Their extensive network delivers advanced imaging and radiation oncology services across outpatient centers and hospital partners nationwide.

Comprehensive Portfolio

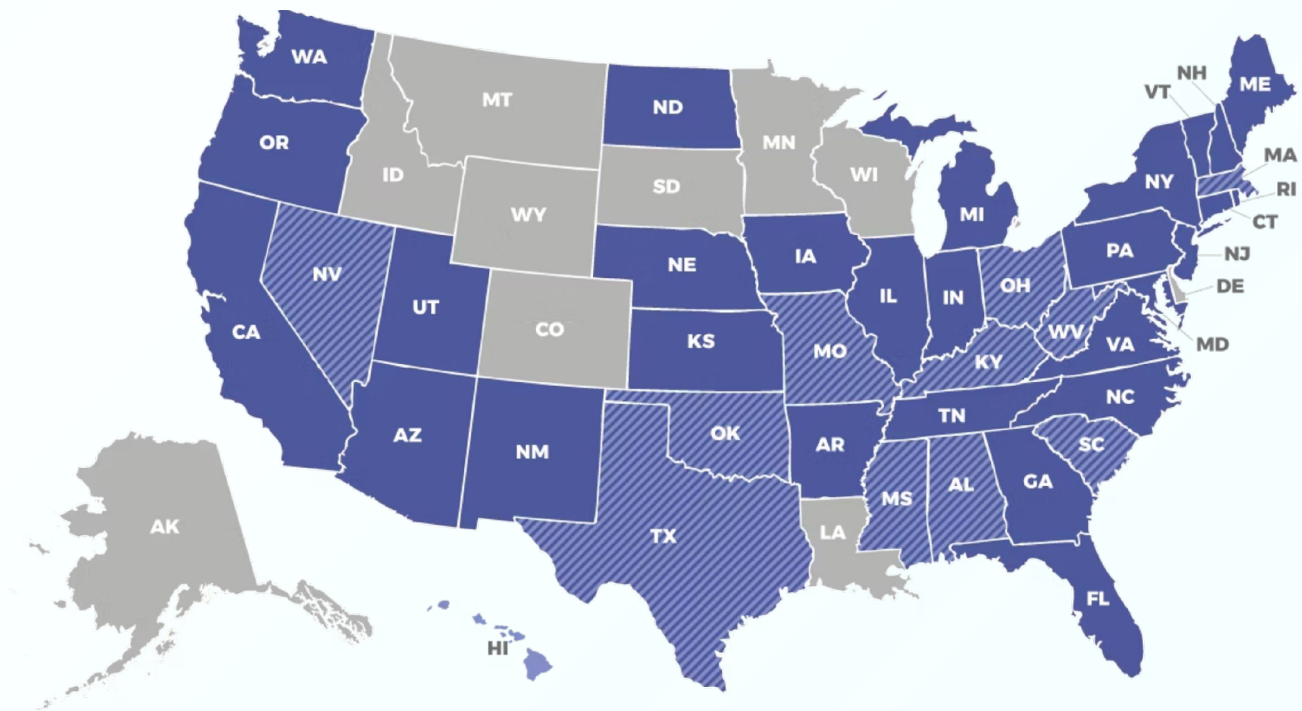
MRI, CT, PET/CT, X-ray, ultrasound, mammography, nuclear medicine, and interventional procedures

Extensive Network

120+ owned/operated outpatient locations and 350+ mobile units - the nation's largest mobile imaging fleet

Strategic Partnerships

Serving approximately 800-1,000 hospital and health system partners across 48 states



● Radiology Locations

▨ Radiology & Oncology Locations

● Oncology Locations

*As of Oct 2025



Driving Faster, Higher Quality MRI & PET with SubtleHD(MR)™ & SubtlePET™

Operational Goals with SubtleHD(MR)TM and SubtlePETTM



Improve Patient Access

Expand imaging capabilities in community hospitals and rural areas to serve underserved populations



Increase Operational Efficiency

Reduce slot times to increase revenue potential and throughput across the enterprise



Standardize Image Quality

Improve and standardize image quality of MRI and PET across all Akumin locations



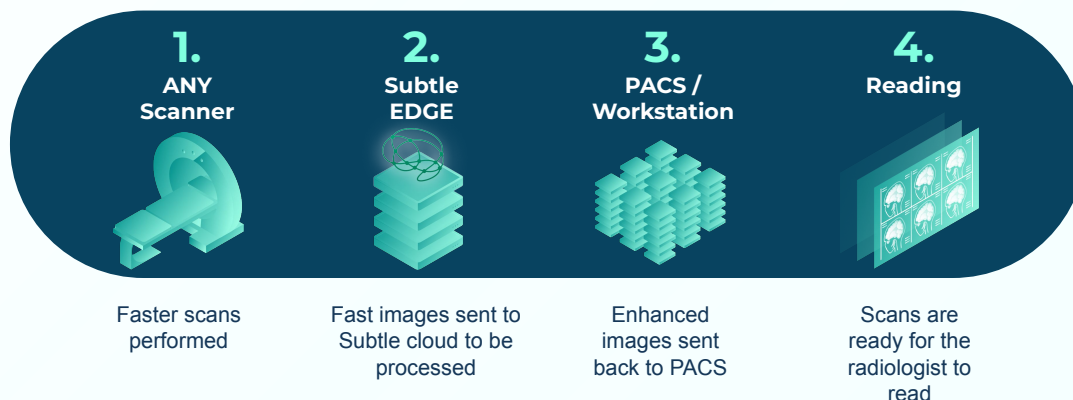
Enhanced Patient Experience

Enable more comfortable scans and reduce callbacks for rescans, improving patient satisfaction

About SubtleHD(MR)TM

SubtleHD(MR) is a deep learning-based software that enhances MRI image quality while enabling up to 80% faster MRI sequences. By simultaneously denoising and sharpening accelerated MRI images, SubtleHD improves diagnostic confidence, small structure visibility, and overall imaging efficiency without disrupting workflow.

How SubtleMRTM Fits Into the Radiology Workflow



- ✓ Works seamlessly with **ALL brands of scanners** (i.e., GE, Siemens, Philips, etc.)
- ✓ No disruption to workflow
- ✓ Cloud or on-premise deployment supported
- ✓ Seconds to process



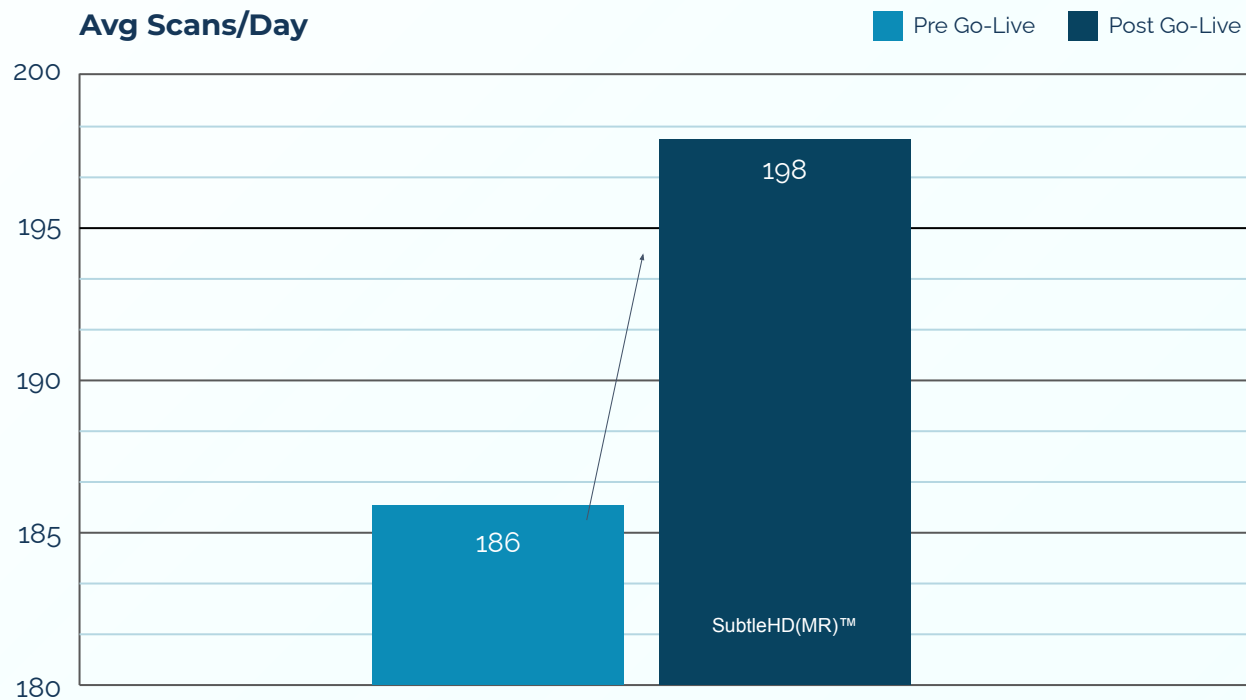
Time Savings Across Protocols with SubtleHD(MR)™

SubtleHD(MR)™ delivers significant time reductions across all major MRI protocols, enabling dramatic improvements in patient throughput and operational efficiency.

Exam	Routine Time	SubtleHD(MR) Time	% Saved
Brain	11:35	6:08	47%
Cervical	19:52	15:34	22%
Lumbar	10:33	6:20	40%
Knee	16:46	13:27	20%
Shoulder	10:46	6:41	38%

12
Additional Patients

Per day per clinic with SubtleHD(MR)™



Est. \$23.6 Million: SubtleHD(MR)™ ROI by End of 2026

54↑

MRI Scanners

Total deployed sites

4↑

Patients/Day

Additional capacity per scanner

\$300

Average

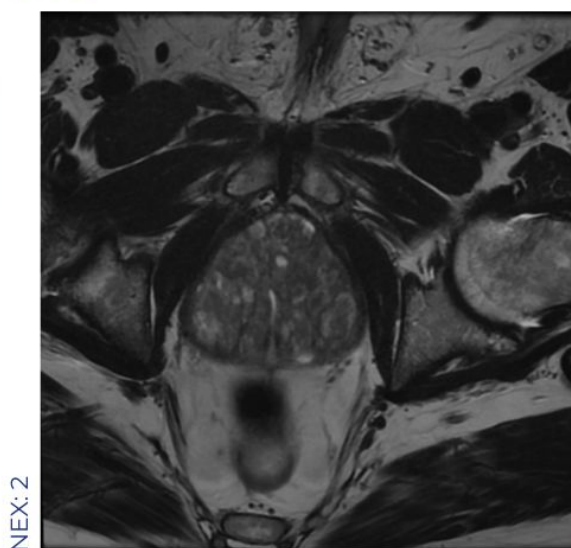
Reimbursement

Per patient scan

Key Financial Benefit: The ROI calculation represents recurring annual revenue improvement, not a one-time gain. This sustainable operational enhancement provides ongoing financial value year after year.

GE Discovery 750W 3T Prostate Ax T2

SubtleHD(MR)™
48%
Time Savings



Acq Time: **6:50**



Acq Time: **3:30**

AKUMIN | 12



SubtlePET™ Technology: Image Enhancement for Low Count PET

Advanced Architecture

SubtlePET utilizes the Residual-in-Residual Dense Block Network (RRDBNet) architecture, a cutting-edge deep learning approach specifically designed for medical imaging.

Prospective Enhancement

The algorithm prospectively enhances image quality of lower photon count images and improves diagnostic utility in real-time during clinical workflows.

SubtlePET™

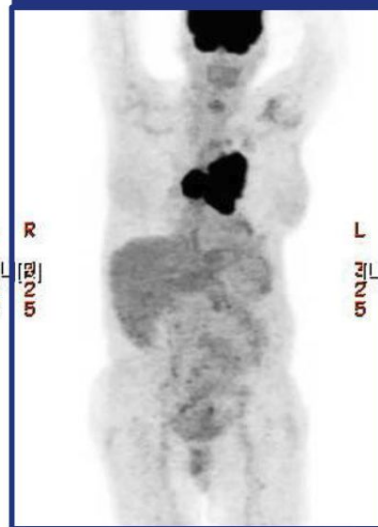
66%
Scan Reduction

Standard of Care



Acq Time: **18 min**
3 min/bed

SubtlePET™



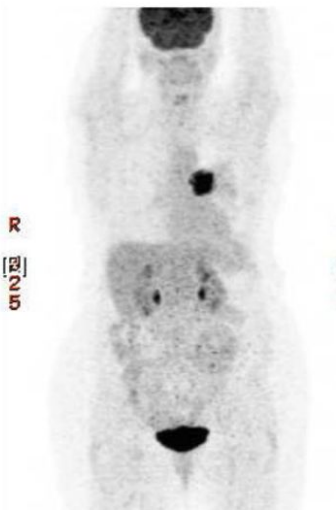
Acq Time: **6 min**
1 min/bed

AKUMIN | 18

SubtlePET™

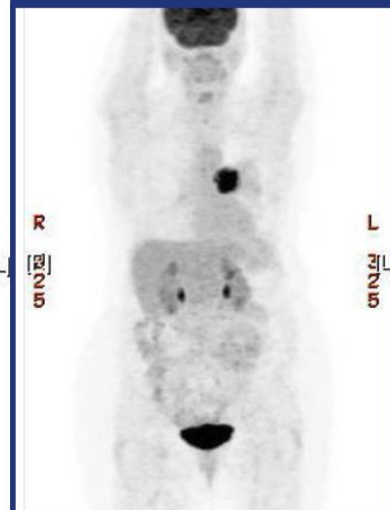
75%
Scan Reduction

Standard of Care



Acq Time: **24 min**
4 min/bed

SubtlePET™



Acq Time: **6 min**
1 min/bed

AKUMIN | 19



SubtlePET™ Pilot Summary

60%
Scan Time Reduction

8 
Additional Slots (est)
From 16 to 24 slots

50% 
Throughput Increase
Per 12-hour day

Operational Efficiency Gains

Speed and quality are no longer a concern, allowing focus to shift to uptake rooms and overall patient flow optimization. The technology creates operational flexibility previously unavailable.

Equipment Utilization Optimization

Opens up time for CT scans when PET isn't at capacity, enabling more effective use of PET/CT dual-modality systems and maximizing capital equipment investments.

Staff Flexibility & Reduced Overtime

More flexibility for technicians means reduced weekend hours and overtime requirements, creating operational leverage while maintaining or improving service levels.

Image Quality Maintenance

Maintained or improved standard of care image quality while reducing scan times. Many customers successfully use SubtlePET™ radiation reduction with low-dose PET protocols.

Choosing the Right Partner

Scalability

Subtle Medical's platform proved robust enough to send data to multiple locations from numerous mobile units simultaneously, handling enterprise-level volume

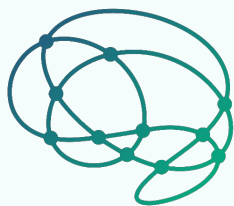
Reliability

Robust platform handles automated heavy lifting and troubleshooting without manual intervention, ensuring consistent performance

Ease of Use

Wide range of technicians engage with the software. Easily usable and produces extraordinary results for radiologists regardless of tech experience level





SUBTLE MEDICAL

FASTER, SAFER, SMARTER™

About Subtle Medical

Subtle Medical, Inc. is an innovative healthcare technology company with a suite of software solutions that use deep learning to increase the quality and efficiency of medical imaging. Subtle's software solutions are integrated at hospitals and imaging institutions worldwide. It is a CB Insights Top AI 100 and two-time Digital Health 150 company. For more information, please visit subtlemedical.com or email sales@subtlemedical.com.

883 Santa Cruz Avenue, Suite 205 Menlo Park, CA 94025

MKT035 Effective 2025-08

Refer to the SubtleHD User Manual for full safety and use information

